

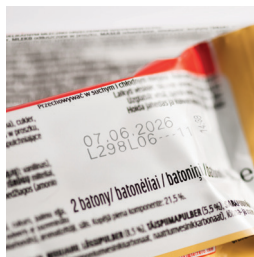
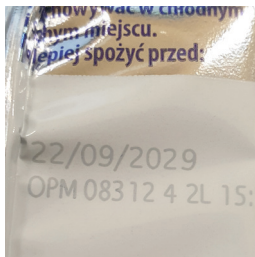
# e-SolarMark+ eFLS

Laser marking and coding system on foils, plastics and metals



## 100,000 plus maintenance-free working hours\*

- Revolutionary solution for permanent coding on packaging foils, various plastic / metal products and packages
- Vector-quality code in Stationary and "On the Fly" marking and coding
- Coding of alphanumeric texts / dates / timers, serial numbers, barcodes, 2D codes and graphics
- Compact and modular design, high integration flexibility due to number of options



Foils and plastics

Metals



## Features

- Internal software on real-time operating system
- Local / remote job choice / modification / creation
- Unauthorized access protection
- Easy connection to the network
- Build-in touch screen panel for local job edition (option)
- On-line data exchange via: network (LAN/Ethernet) serial (RS232) and USB
- Different languages versions: English, Chinese, French, German, Spanish, Italian, Dutch, Polish, Swedish and Portuguese
- System available as OEM version

\*No consumables: typical laser life time of 100 000 working hours

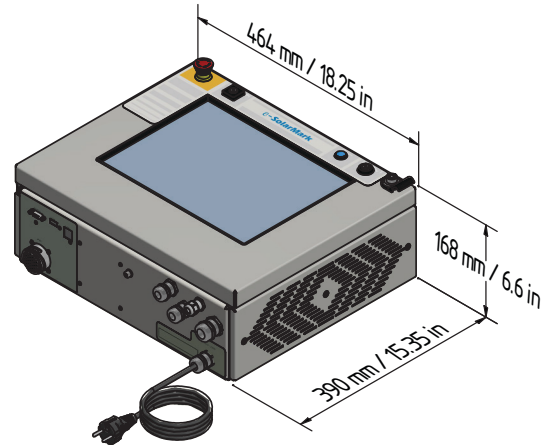
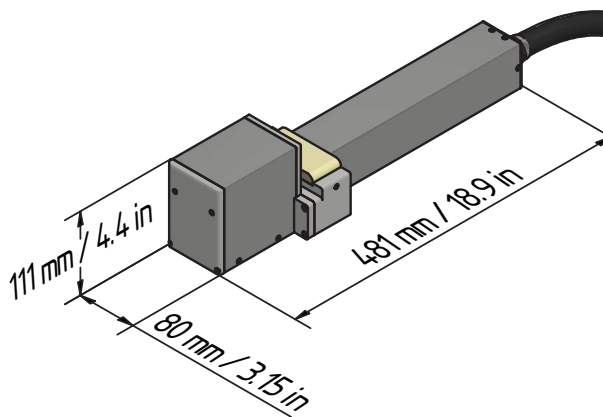
\*Minimal costs of operation: integrated air-cooling, 1-ph power supply, low power consumption



**SOLARIS LASER**

a **DOVER** company

# e-SolarMark+ eFLS specifications



Laser type	20 W, 30 W
Wavelength	1062 nm
Marking speed	1600 characters/sec Characters height 2mm, Lens and Material Dependent
Lens type	F-Theta
Marking field (mm)	LF4 100x100, LF6 150x150
Lifetime	100,000 working hours average
Electrical requirements	230V 50Hz / 115V 60Hz, IPH
User interface	Multilanguage 15-inch touch screen with user friendly, intuitive interface for Preview, Edit & New jobs creation and System setup
Power consumption	400 W
Cooling	Air, integrated
Ambient temperature	5-40°C ( 40-105°F); Suggested 20-25°C (68-77°F)
Enclosure type	IP 52 / NEMA 12
Dimensions	Control unit: 192mm x 420mm x 380mm, 7.6 in. x 16.5 in. x 15.0 in. Marking unit: 122mm x 108mm x 540mm, 4.8 in. x 4.2 in. x 21.3 in.
Weight	15 kg (33 lb .) 5 kg (11 lb.)
Communication	USB / RS232 / Ethernet IO Base T Shaft encoder input (recommended encoder resolution: 8196 pulses per marking field length) Product detector input: NPN / PNP - 24V Sensor Input I Output connector for: System interlocks; Remote Start / Stop, Ready, Marking, Fault signals SolMark II job edition software available for: Windows 9x, NT, 2000, ME, XP
Optional configuration	Red laser pointer for marking position preview System setting for printing on highly sensitive plastic materials (e.g. foils) Touch Screen GUI Control Unit interface for local job creation and modification

## Optional accessories

- Fumes I Dust Extractor (with Active Carbon filter)
- Product Detector and Shaft Encoder



CE and CDRH  
compliant



Solaris Laser Sp. z o.o  
Farbiarska 39, 02-862 Warsaw, Poland  
Tel.: +48 22 843 18 03  
sales@solarislaser.com.pl  
www.solarislaser.com.pl